



FAYAT

CONSTRUCTION ROAD

Fayat Road Equipment
Construction | Maintenance | Rehabilitation

Fayat Road Equipment

A World leader in Road Equipment

With 24 production sites spread across Europe, Asia, and the Americas, the Division's 5,600+ staff offer their clients bespoke innovative and sustainable solutions worldwide. Our products and services, which are suited to all types of markets, cover every stage of the road lifecycle: soil preparation, asphalt production and application, compaction, road maintenance and recycling, as well as cleaning solutions. Based on our end-to-end road construction, maintenance and rehabilitation approach, our local experts assist their clients by offering them solutions suited to specific context of each site, constantly working to protect the environment, optimise performance, and rationalise costs.



Our portfolio includes

- ASPHALT, EMULSION & BITUMEN PLANTS
- ROAD & SOIL COMPACTORS
- FINISHERS & FEEDERS
- COLD MILLING MACHINES
- RECYCLERS & STABILISERS
- ROAD MAINTENANCE EQUIPMENT
- ENVIRONMENTAL SOLUTIONS

Fayat Road Equipment



Production units and sales offices

Fayat group have production centres as well as sales / service outlets in various parts of India. We have been manufacturing Dynapac rollers and pavers in India for over 14 years and have rolled out close to 10,000 units from India. Our Asphalt batch plant production unit is based at Ahmedabad where we make latest range of batch plants from 120-240 tph. We have our office for Dulevo in India at Noida and we cater to many cities with our sweepers. In addition, Fayat group also has a design centres at Bangalore where we have global engineering capabilities.

Our presence in India

About Marini

Established in 1899, a Fayat Group Company for three decades, Marini is a world leader in the technology and manufacturing of stationary and mobile batch asphalt plants with production sites in Italy, Turkey, China, India, offices in Russia and UAE and a global partner network.

With a capacity of up to 400 t/h, relying on the most modern technologies and over 120 years of experience made in Italy, Marini's equipment distinctive features allow customers around the world to produce low energy consumption asphalt using up to 100% of recycled asphalt pavement (RAP).

Unique project management capabilities combined with outstanding technical support, service availability, a global footprint and a dedicated training Academy make of Marini the customer's choice when it comes to reliability, innovative technology and comprehensive support.

About Marini India

Marini, a company of the Fayat Group, journeyed into India in 2010 and registered its office as Marini India Private Limited offering its expertise in engineering and spares support to its Indian customers. In due course of time, Marini India rolled out its first Plant in 2015 to cater to the country's immediate impending infrastructural needs vis-à-vis roads, highways, runways, to name a few. A world leader in recycling technology, high quality mix production, reliable performance, ecologically sensitive, intuitive solutions and customer oriented services, Marini India aims at delivering all customers cost effective and carbon footprint reduced and almost zero discharge asphalt plants.



- **SMART DRYER DRUM**
- Built in special steel, robotically arc-welded.
- Specially engineered drum dimensions, reduced gas speed, energy efficient dryer flights to maximize thermodynamic exchange and reduce fuel consumption.
- Dual sensors for instantaneous monitoring & control of delivery temperature at the drum outlet.
- Wear resistant steel liners on high abrasion areas ensure unhindered production and product life.

- **Plant Management - Cybertronic 500 FAST" with energy control**
- Fully developed by MARINI and installed before delivery.
- Maximum usability and user friendly.
- In-house design based on Operator's suggestions and needs, tested every day all over the world.

SMART BURNER

- MONOBLOCK DESIGN to save time during assembly.
- BLUE AIR ASSIST to ensure highest atomization and low wear.
- BURNER SILENCER to ensures low noise during operation.
- Multi-fuel burner.

A design that meets Environmental Needs

- LOWEST CARBON FOOTPRINT - Makes all your asphalt operations sustainable.
- SMART FINES HANDLING - Reduces 45 % of energy consumption.
- SMART & SHORT DUCTS - Reduces wastage of heat & increases efficiency.
- SMART DUST CONTROL - Smart Dust handling delivers clean sites.



High Fuel Efficiency

Increase your Profits through Fuel Saving. Imported Monoblock Multifuel Burner ensures low fuel consumption and easy to use operating systems.



High Productivity

Delivers productivity of Asphalt production without bottlenecks for all type of Mixes.



Low Operating Cost

Plant with safe and reliable components. Minimize non-productive times, avoid unscheduled break-downs.



High Mix Quality

Our plants are known for best and homogeneous quality mix because of Highly Accurate weighing & batching system. Highly evolved Mixer Design to best mix and lower maintenance cost



Compact / Modular Design




Modular and ease to transport. Quick Erection - Improves the overall profitability on Manpower /Vehicles



Future ready Plant & Environment

Plant ready for future updates RAP, Warm Mix Asphalt, SMA etc. Global Cybertronic software

Hot mix batch asphalt plants, mobile / transportable / stationary

Max production (t/h)	120	160	200	240	260
MAX Mobile					
MAC Stationary, transportable					
MAP Stationary					

Dynapac is committed to being “Your Partner on the Road Ahead”. We take pride in supporting you with just the right solutions to fulfill your construction jobs at highest quality and profitability.

We focus on solving your pains so that we can create new opportunities for you in improving your business. The key focus areas to create customer value for Dynapac are on following areas.



Job site confidence

Keep your team confident and healthy when operating on the job site. Ensure good working safety, ergonomics and easy to use operating systems.



High Productivity

Increase the productivity of your job sites through efficient paving and compaction operation. Reduce non-productive times on the job site.



Maximum Uptime

A machine has to run to make money! Minimize non-productive times, avoid unscheduled break downs.



High Quality Results

Avoid penalties and rework! Stabilize the quality of your paving and compaction jobs.



Low Cost of Ownership

Improve the overall profitability of your investment by reducing the costs of operating the machine while maintaining a high equipment value.



Environment/Sustainability

Protect the environment. Show your social responsibility and collect on tenders that require low CO2 and noise emissions.

We do this by offering rollers and paver as per our global platform that has been tailored to meet local needs like CEV IV emission, GSR safety regulation in India or optimization of maintenance cost suitable for local conditions.

Dynapac offers a comprehensive range of road construction equipment that includes Soil rollers, Asphalt rollers, Pavers, Light equipment as well as Aftermarket solutions.



Model	CA245	CA305	CA305 D	CA305PD	CA385D	CA385PD
Operating weight, kg	9,600	11,200	11,400	12,800	13,000	14,000
Static linear load (kg/cm)	25	31	31	NA	39	NA
Engine Power (hp)	75	110	110	110	110	110



Model	CC125	CC425	CP275
Operating weight, kg	3,075	9,200	14,500
Static linear load (kg/cm)	12 / 12.8	27.2 / 27.2	30000
Engine Power (hp)	39	74.5	140



Model	F2500CS	SD2500CS	SD2550CS
Basic width (m)	2.55	2.55	2.55
Maximum Paving capacity (m)	7.5 - 9	10.5	13.25
Engine Power (hp)	129	149	194
Screed	V6000TVE (Vario)	V6000TVE(Vario)	R300TVE (Fixed)

Our Light Equipment range compliments our larger compaction & paving equipment to get the job done in relatively confined spaces. We focus on every possible type of material to compact, through weight classes and different types of machines.

Here, you discover more about the REDLINE Light equipment. In Light Compaction equipment Rammers, forward and reversible vibratory plates, twin drum rollers and also provide cutters, Mechanical pokers, Drive Units for Mechanical Pokers, Electronic pokers and frequency converters - A fantastic range of equipment

Redline Walk-behind Roller (RW750D)

New generation walk-behind roller equipped with keyless operation and automated hydraulic braking system facilitates hassle-free operation even in the steepest of terrain. Self-fault Diagnosis and accessible service points reduce downtime. Heavy metal body provides protection to the machine and enables it for harsh site and environmental conditions. Easy to clean water clean water sprinkling system helps for continuous compaction.

An ideal combination of static linear load, frequency & speed provides maximum productivity

Model	RW750 D
Operating Mass, kgs	745
Frequency, Hz	60
Engine	Kohler KD 441
Fuel Tank Capacity, l	5
Forward & Reverse Speed, kmph	4.5/2.5



Redline Forward Plates (RV50, RV80, RV100, RV140D)



Redline forward plate features maximum uptime, Operating comfort and Minimum Cost by it's heavy-duty base plate that offers excellent wear resistance. Protected from the sand and stones, fully enclosed belt drive maximizes the lifetime of components like the V belt.

Model	RV50	RV80	RV100	RV140D
Weight class, kgs	50	78	104	137
Prime mover	Gasoline	Gasoline	Gasoline	Diesel
Engine	Honda GX160	Honda GX160	Honda GX160	Honda GX1520

Redline Reverse Plates (RR150, RR180, RR200D)

When it comes to larger areas, the powerful RR's from Redline are ideal for the job – traction and compaction made easy. Extreme conditions are easily dealt with, thanks to their rugged design and all around hard shell.

Vibration-dampened control lever features comfort for the operator for the long working hours.



Model	RR 150	RR 180	RR 200 D
Weight class, kgs	149	183	196
Prime mover	Gasoline	Gasoline	Diesel
Engine	Honda GX160	Honda GX200	Greaves 1520

Redline Concrete & asphalt cutter (RC185)

Arrives equipped with a user-friendly, 40-litre capacity water tank, ensuring uninterrupted cutting. Its one-point lifting hook and wheels allow for effortless mobility. Additionally, the depth-locking feature and equipped with a diamond cutting blade ensure accurate, precise and high-quality cutting for roads irrespective of material.

Extreme wear resistance results in an increase in life span, thereby reducing the operating cost. The higher resolution of blades ensures low noise, vibration and pollution making it environment friendly.

Model	RC 185
Weight class, kgs	135
Prime mover	Gasoline
Engine	Honda GX390
Cutting depth	185



350 mm

450 mm

510 mm

Redline Mechanical drive units and pokers

- Tougher
- Reliable
- Convenient
- Lighter
- Powerful
- The RP frameworks are controlled by solid effective drive units with low energy utilization.



Drive units	RD 22 E	RD 36	RD 37 D
Weight, kg	29.3	60	24
Type	Electrical Single Phase	Gasoline	Electric
Engine brand	Branded	Honda GX160	Greaves 1520
Power, rpm	2.2 kW @ 2800 rpm	3.6 kW @ 3600 rpm	3.67 kW @ 3600 rpm
Fuel Tank Capacity		4.1 Liters	3.1 Liters

Mechanical Pokers	RP30	RP45	RP60
Tube diameter	30	45	60
Hose length, m	5	5	5
Total weight, kg	10	16	18
Vibration values, m/s ²	5.2	2.42	8.27
Sound Power, LW db (A)	80-85	78	83
Frequency, VPM	12500	12000	11300

Redline Electronic Poker

Introducing our latest range of Electronic pokers, engineered for exceptional performance and productivity. With an extended radius of action, these pokers deliver optimal results. Featuring IP 67 protection, they excel even in demanding environments. The inclusion of heat protection for the needle and a self-trip switch enhances safety and longevity, ensuring a reliable and durable machine.



Sweepers

By putting the elimination of fine particles released into the environment first, Dulevo is the only company that uses the same ultra-fine filtering method in all its sweepers, limiting itself to adapting the dimensions to the model. Thanks to the constant search for cutting-edge solutions suited to the needs of the market and the end customer, Dulevo has created a wide range of sweeper models for both outdoor and indoor cleaning.

Dulevo 6000 and Dulevo D3

Dulevo 6000 & Dulevo D3 Street Sweeper combines tradition with innovation, redefining the sweeping concept. Maximum efficiency and savings in consumption are the main characteristics of the new 6000 & D3 that puts the operator at the center ensuring the best driving comfort.

Technical Data	Dulevo 6000	Dulevo D3
Sweeping width main broom (mm)	1300	1300
Sweeping width side brushes (mm)	2600	2150
Sweeping width with side brushes and third brush (mm)	3500	3200
Waste container capacity (m ³)	6.2	3.3
Unloading height (mm)	1150 / 2400 (optional)	1570 -1730
Fuel	Diesel	Diesel
Filtration PM10/PM2,5	EUnited	Eunited



Dulevo 120

Its capacity to capture both the finest dust and gravel makes Dulevo 120 the perfect machine for working in any type of environment, even the dustiest. In fact, thanks to its direct-load, mechanical suction-filtering sweeping system, it guarantees excellent cleaning results even in particularly difficult working conditions.

Dulevo 1100

The Dulevo 1100 sweeper is equipped with a Gore® filter, a technology that guarantees the best dust filtration results. Find out more about its features.

The Dulevo 1100 sweeper has the best features of any machine in its category. The Dulevo mechanical suction-filtering system guarantees a high working autonomy and excellent results, providing total dust control without the use of water.

Technical Data	Dulevo 120DK	Dulevo 1100EH
Minimum Sweeping width mm	1200	750
Maximum sweeping width mm	2050	1440
Waste container capacity l	800	220
Hourly performance cum/h	16400	10080
Filtration PM10 (%)	99	99
Power supply	Diesel	Electric 36V



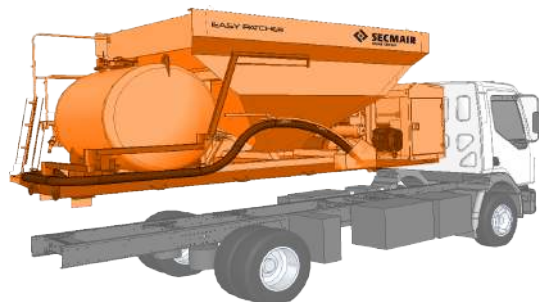


About Secmair

Secmair specialises in the design and manufacture of road maintenance equipment. Innovation, quality, design and service have been the keys to Secmair’s success since 1981. Secmair holds the top position in Europe when it comes to road maintenance solutions.

Easypatcher

It is a pothole treatment machine which quickly and effortlessly repairs potholes, cracks and fissures.



Technical Data

Assembly	Truck or 2-axle trailer
Tank capacity	1,000 L
Tipper capacity	6m ³
Application arm	Length 4 m - foldable into 3 sections
Auxiliary engine	DEUTZ diesel engine - 32 kW at 2,000 rpm
Auxiliary motor supply	60 L diesel tank
Blower	11 000 L/min @1bar
Compressor	400 L/min @8bar
Empty weight	2.5 T
Dimensions	Length: 5,893 mmWidth: 2,290 mmHeight: 2,353 mm
Machine flow	30kg/min



ECONOMY

- > Applying the right quantities
- > Reduce the downtime due to refill operation



ERGONOMICS

- > Articulated patching arm
- > Control panel on the patching arm



EFFICIENCY

- > Less than 2 Minutes to treat a pothole
- > 4 steps for a lasting repair

Cepia

Mini self propelled spreader for chips or hot mix asphalt.

Technical Data

Hopper capacity	150 L
Max working width	1,000 mm
Min working width	250 mm
Number of hatches	4
Spreading height	0 to 100 mm
Engine	Honda GXV 160 - 3,2 kW
Petrol	Unleaded gasoline
Hydrostatic drive	G730
Table heating	Exhaust gas heat recovery
Max working position length	2,000 mm
Transport position length (handlebar folded)	1,670 mm
Weight empty	220 kg



ECONOMY

- > Reduce Jobtime
- > No overdosing/no material waste



ERGONOMICS

- > Effortless load movement and application
- > Intuitive operating mode



EFFICIENCY

- > Loading capacity x3 compared to a wheelbarrow
- > Precise application of chips or hot mix asphalt

Chipsealer

The chip sealer is a versatile machine combining both binder and chips applications. It adapts itself do any kind of job site, Surface dressing, tack coat before hot asphalt mix, coating and priming, localized treatments.

Technical Data	
Type of binder	Bitumen emulsion, hot bitumen (modified or not), ADR option possible
Tank capacity	From 3,500 L to 9,000 L (increment of 1,000 L)
Insulation	100 mm aluminium or stainless steel
Type of heating	Direct or indirect (with thermal oil)
Spraybar	3.20/3.6 m foldable or 4.4 m telescopic
Binder application rate	From 0.1 to 3 kg/m ²
Hand lance	Option: 15 m with winder
Chips size	From 2 mm to 20 mm
Tipper capacity	From 4,5 to 8 m ³
Chips spreader	3.20 m foldable
Chips application rate	From 2 to 16 L/m ²
Control	In cabine : joystick with 12" screen/ computerized application rates



ECONOMY

- > Applying the right quantities
- > Applying at the right place no overdosing



ERGONOMICS

- > In cab control
- > Many options designed to simplify your jobsite



EFFICIENCY

- > 1 operator
- > 1 machine for 2 operations spraying and spreading

Breining Slurry Surfacing Applicator

- It is a high-quality and simple machine to make slurry and micro surfacing.
- One machine to produce and apply slurry or microsurfacing.

Technical Data	
Aggregate hopper	8/12 m ³ in stainless steel
Aggregate dosing	By belt, from 500 to 1,500kg/min Flow measurement by weighing roller(in option)
Monobloc tank	3,200L emulsion/2,200L water/500 l liquid dope for 8m ³ hopper 6,000L emulsion/4,000L water/600 liquid dope for 12m ³ hopper
Liquid dosing	By pressure or pump Emulsion from 20 to 200 L/min Water from 20 to 130 L/min Dope from 10 to 25 L/min flow measurement by electromagnetic flow meters
Cement hopper	From 300L up to 600 L in stainless steel possibility to compartmentalized for application of colored pigments
Cement dosing	By extractor, from 5 to 40 kg/min/flow measurement by speed encoder
Mixer / Blender	2 shafts with 30 blades each
Application table	Hydraulically extendable, from 2.5 to 4 m



ECONOMY

- > Applying the right quantities
- > Applying at ambient temperature no need to heat



ERGONOMICS

- > Friendly man/machine interface with colors
- > The control station of the spreader box ensures the visibility of the mix during production



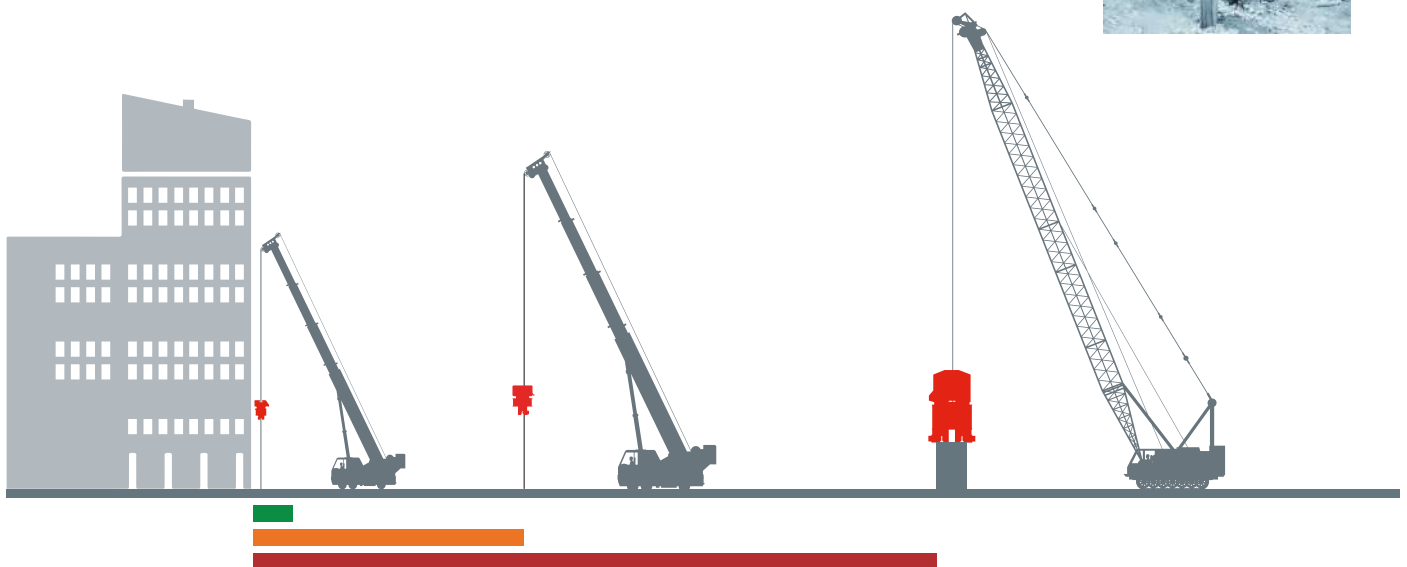
EFFICIENCY

- > Up to 10 000 square meter per day
- > Automated application rate control

About PTC

PTC, French company created in 1928, is specialized in the manufacturing of construction equipment for deep foundations and ground improvement.

PTC offers solutions for applications of pile driving (sheet piles, casings, H beams, etc.), as well as vibrocompaction and ballasted columns



URBAN RANGE: HFV

HFV: High Frequency vibrodrivers with PTC Patented Variable moment Technology

SUBURBAN RANGE: HV

HV: Medium Frequency Vibrodrivers with PTC Patented Variable moment Technology


HEAVY DUTY RANGE: H / HD

H/HD: Medium Frequency Vibrodrivers with Fixed eccentric moment

Weight Class (kg)	Model
1,990	10HFV
3,679	16HFV
3,772	24HFV
6,300	32HFV
6,975	40HFV
7,085	48HFV

Weight Class (kg)	Model
3,900	24HV
3,970	30HV
6,500	48HV
6,750	60HV

Weight Class (kg)	Model
185	1HF
1,880	15H
4070 - 4400	30H
5,800	50HD
6,550	65HD
10,610	75HD
13,300	120HD
20,600	200HD

The image features a modern building with a glass and metal facade under a blue sky. Overlaid on the image is the Fayat logo, a yellow geometric shape resembling a stylized 'F' or a square with internal lines. Below the logo, the text 'FAYAT' is written in large, bold, white capital letters, and 'ROAD EQUIPMENT' is written in smaller, bold, white capital letters below it. The entire text and logo are centered. There are also several yellow geometric shapes, including diamonds and lines, scattered across the image, some overlapping the text and logo.

FAYAT

ROAD EQUIPMENT

Fayat Road Equipment
Construction | Maintenance | Rehabilitation

Connect with us at fredindia@fayat.co.in

Contact us: 7574892323